

SAF PIVOT BUSH TOOL - INSTRUCTIONS

 **08799000**



4.177.3028.00
3D pivot bush



IMPORTANT: PRIOR TO OPERATION, CORRECT SAFETY PROCEDURES AS RECOMMENDED BY THE MANUFACTURER MUST BE FOLLOWED.
NOTE: RECOGNISED PRACTICE IS TO REPLACE PIVOT BUSHINGS IN PAIRS.

REMOVAL

CORRECT REMOVAL ORIENTATION



- A** Threaded Rod
- B** Thrust Washers
- C** Thrust Bearing
- D** Cover Plate
- E** Receiver Tube
- F** Thrust Spacer
- H** Drive Nut

REMOVAL INSTRUCTIONS

1. Before carrying out any work or repairs on the trailer, be sure to check the vehicle thoroughly to ensure that all safety precautions are met and the correct appropriate tools are used in conjunction; jacks, axle stands, etc.
2. Bleed the air suspension and remove hanger bolts, shocker mount bolts and shims before removal of the bush takes place.
3. Position the receiving tube with the widest opening facing away from the trailing arm and the opening with the lip (fig. 1) facing the arm to be seated.

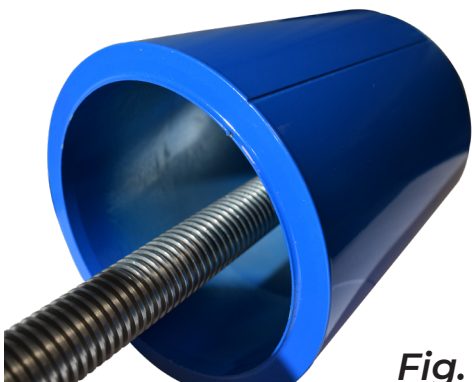


Fig. 1



Fig. 2

4. Create two lines on the trailing arm using white marker or similar, one either side, as reference points. Rotate the receiver tube to line up with one of the marked lines on the trailing arm (fig. 2).
5. Using a ratchet* turn the threaded bolt to draw the bush into the receiving tube. Make sure to support the tool as the bush finishes its travel to save the tool from falling and getting damaged.
6. Apply lever between bolts (fig. 3) to keep the drive nut stationary while the screw passes through it. Continue ratcheting until the bush becomes loose.

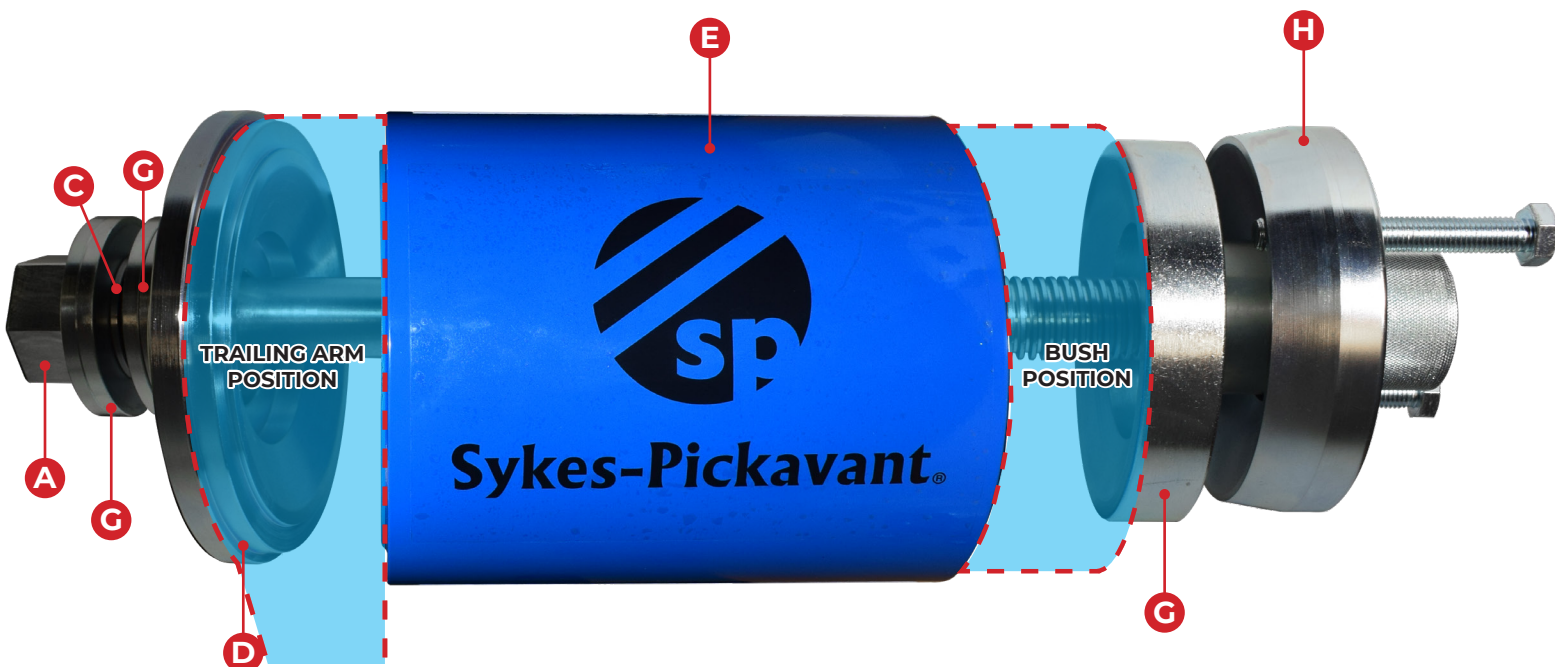
***N.B. DO NOT USE AN IMPACT GUN**



Fig. 3

INSTALLATION

CORRECT INSTALLATION ORIENTATION



- A** Threaded Rod **B** Thrust Washers **C** Thrust Bearing
- D** Cover Plate **E** Receiver Tube **F** Thrust Spacer
- G** Drive Disc **H** Drive Nut

1. Clean debris from original bush and any rust or debris from the trailing arm aperture, ensuring that the surface is smooth and free of build up.
2. Cover the inside of the trailing arm eyelet generously with P80 rubber lubricant, also applying to receiver tube and edge of bush.
3. Mark edge of bush to help with alignment for installation (fig. 4).



Fig. 4

4. Ensure marks on bush and receiver line up with bush inserted in receiver tube (fig. 5).

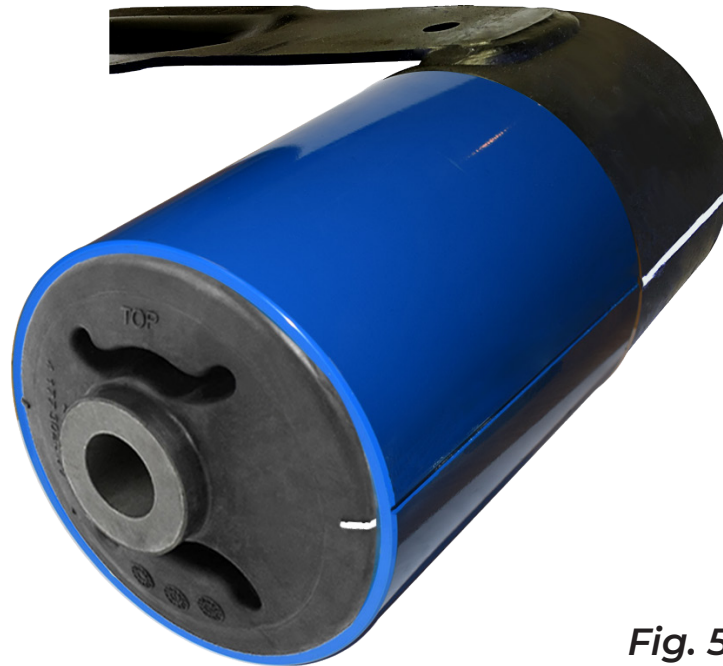


Fig. 5

5. Insert threaded bar through the cover plate and into the receiver tube and then through the bush.
6. Screw on the thrust washer until flush with the bush.
7. Pull the bush into the receiver tube with a wrench until the bush is nearly at the end of the tube.
8. Remove the threaded bar and cover plate and insert them into the trailing arm.
9. Install the assembled receiver tube and bush onto the threaded bar and screw onto thrust washer.
10. Make sure that the receiver tube is lined up with the reference marks which are orientated with the axle guides.
11. Push the bush into position by turning the nut on the threaded bar into the receiver tube until the receiver tube comes loose.
12. Remove tube and continue until the thrust nut is tight, the tube should have been pushed flush with both sides of the trailing arm.
13. Reverse the wrench to remove the installer.
14. Make sure that the top and side marks are aligned with the axle guides and that the bush is inserted equally both sides.