



Please dispose of packaging for the product in a responsible manner. It is suitable for recycling. Help to protect the environment, take the packaging to the local amenity tip and place into the appropriate recycling bin.



500kg Transmission Jack



03871

FOR HELP OR ADVISE ON THIS PRODUCT PLEASE CONTACT YOUR DISTRIBUTOR,
OR SIP DIRECTLY ON:

TEL: 01509500400

EMAIL: sales@sip-group.com or technical@sip-group.com
www.sip-group.com

Please read and fully understand the instructions in
this manual before operation. Keep this manual
safe for future reference

Declaration of Conformity

We

SIP (Industrial Products) Ltd
Gelders Hall Road
Shepshed
Loughborough
Leicestershire
LE12 9NH
England

As the manufacturer's authorised representative within the EC
declare that the

500kg Transmission Jack - SIP Pt. No. 03871


Conforms to the requirements of the following directive(s), as indicated.

2006/42/EC

Machinery Directive

And the following harmonised standard(s)

EN ISO 12100:2010
EN 1494:2000+A1:2008
EN 349:1993+A1:2008
EN 953:1997+A1:2009
EN 13857:2008

Signed: 

Mr P. Ippaso - Director - SIP (Industrial Products) Ltd
Date: 26/06/2012.



Page No.	Description
4	Safety instructions
5	Contents
6	Specification
7	Assembly
8	Using the jack
8-9	Maintenance
9	Troubleshooting
10	Exploded diagram
11-12	Parts list
15	Declaration on conformity

SAFETY INSTRUCTIONS

IMPORTANT: Please read the following instructions carefully, **failure to do so could lead to serious personal injury and / or damage to the Transmission jack.**

When using your transmission jack, basic safety precautions should always be followed to reduce the risk of personal injury and / or damage to the jack. Read all these instructions before operating the transmission jack and save this user manual for future reference.

SIP recommends that this transmission jack should **not** be modified or used for any application other than that for which it was designed. If you are unsure of its relative applications do not hesitate to contact us and we will be more than happy to advise you.

KNOW YOUR TRANSMISSION JACK: Read and understand the owner's manual and labels affixed to the jack. Learn its applications and limitations, as well as the potential hazards specific to it.

DO NOT USE THE TRANSMISSION JACK IN DANGEROUS ENVIRONMENTS: Do not use your jack in damp or wet locations, or expose it to rain.

KEEP CHILDREN AND UNTRAINED PERSONNEL AWAY FROM THE WORK AREA: All visitors should be kept at a safe distance from the work area.

STAY ALERT: Always watch what you are doing and use common sense.

NEVER LEAVE THE TRANSMISSION JACK UNATTENDED: When in use.

HAVE YOUR TRANSMISSION JACK REPAIRED BY A QUALIFIED PERSON: The transmission jack is in accordance with the relevant safety requirements. Repairs should only be carried out by qualified persons using original spare parts, otherwise this may result in considerable danger to the user and void the warranty.

- **DANGER!** Check that the transmission jack is in sound condition and good working order. Take immediate action to repair or replace damaged parts.
- **Use recommended parts only** - Unapproved parts may be dangerous and will invalidate the warranty.
- **WARNING!** Only operate on a level and stable surface.
- **WARNING!** Do not allow untrained persons to operate the machine and do not operate the transmission when under the influence of drugs or alcohol.
- **ALWAYS locate the transmission jack on a stable and level surface.**
- **ALWAYS keep children and animals away from transmission jack.**
- **Never stand on the transmission jack**
- **DO NOT** dismantle or tamper with the transmission jack, as this may be dangerous and will invalidate the warranty.
- **ALWAYS** make sure the load is central on the saddle to avoid any off load lifting which may cause damage to the transmission jack and cause personal injury.
- If a problem with the transmission jack is experienced contact your distributor for repair.

NOTES

PARTS LIST Cont...

Ref No.	Description	SIP Part No.
*31	Ring (Ø12)	HY01-00023
*32	Ball	HY01-00023
*33	Foot pedal	HY01-00023
*34	Washer (M10)	HY01-00023
*35	Screw (M10)	HY01-00023
36	Leg stand	HY01-00024
37	Bolt (M10 x 25)	HY01-00025
38	Spring washer (M10)	HY01-00026
39	Washer (M10)	HY01-00027
*40	Seal ring	HY01-00028
*41	Bolt	HY01-00028
*42	Domed nut (M12)	HY01-00029
*43	Spring washer (M12)	HY01-00029
*44	Washer (M12)	HY01-00029
45	Castor	HY01-00030

*Items supplied as kits, Ref No 16-19, Ref No 24-29, Ref No 31-35, Ref No 40-41, Ref No 42-44

CONTENTS

Description	Qty
M10 x 25 Bolt	4
M10 Washer	4
M10 Spring washer	4
M12 Domed nut	4
M12 Washer	4
Castor	4
Leg stands	2

GUARENTEE

Guarantee:

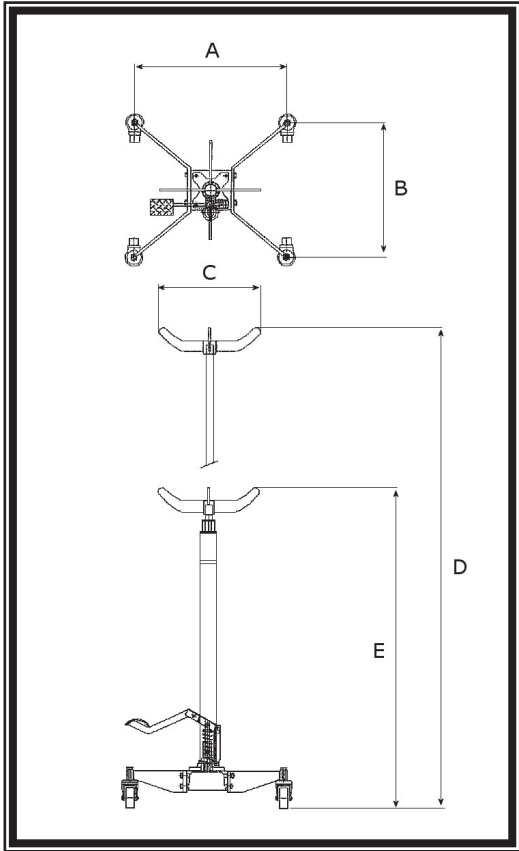
This SIP transmission jack is covered by a 12 month parts and labour warranty covering failure due to manufacturers defects. This does not cover failure due to misuse or operating the machine outside the scope of this manual.

In the unlikely event of warranty claims, contact your distributor as soon as possible. Proof of purchase will be required before any warranty can be honoured.



Note: Proof of purchase will be required before any warranty can be honoured.

SPECIFICATIONS

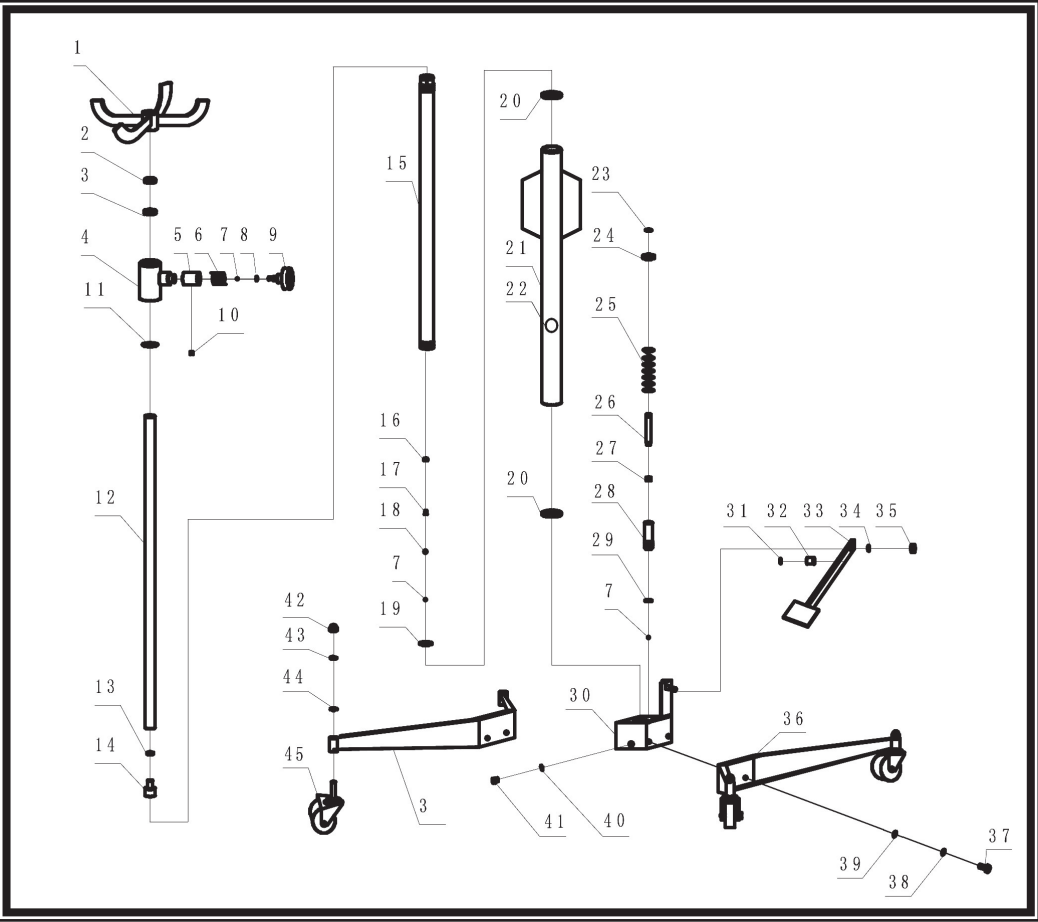


Ref No.	Dimensions
A	580 mm
B	545 mm
C	330 mm
D	1995 MM
E	1175 MM

PARTS LIST

Ref No.	Description	SIP Part No.
1	Saddle	HY01-00001
2	Dust proof cover(36x30.5x6.5)	HY01-00002
3	Seal ring (38x30x6)	HY01-00003
4	Valve cover	HY01-00004
5	Spring cover	HY01-00005
6	Spring	HY01-00006
7	Steel ball	HY01-00007
8	Seal ring (7.7x1.9)	HY01-00008
9	Release valve	HY01-00009
10	Fixed screw (M6x10)	HY01-00010
11	O`Ring (39.5x3.5)	HY01-00011
12	Piston	HY01-00012
13	Seal (Ø16)	HY01-00013
14	Piston head	HY01-00014
15	Cylinder	HY01-00015
*16	Spring bolt	HY01-00016
*17	Spring	HY01-00016
*18	Steel ball (Ø10)	HY01-00016
*19	Gasket ring	HY01-00016
20	Seal (61x58x56x4)	HY01-00017
21	Tube	HY01-00018
22	Oil filler screw	HY01-00019
23	Ring (Ø16)	HY01-00020
*24	Spring cover	HY01-00021
*25	Spring	HY01-00021
*26	Pump piston	HY01-00021
*27	Seal (16x10x8)	HY01-00021
*28	Pump piston cover	HY01-00021
*29	Gasket ring	HY01-00021
30	Base	HY01-00022

EXPLODED DIAGRAM



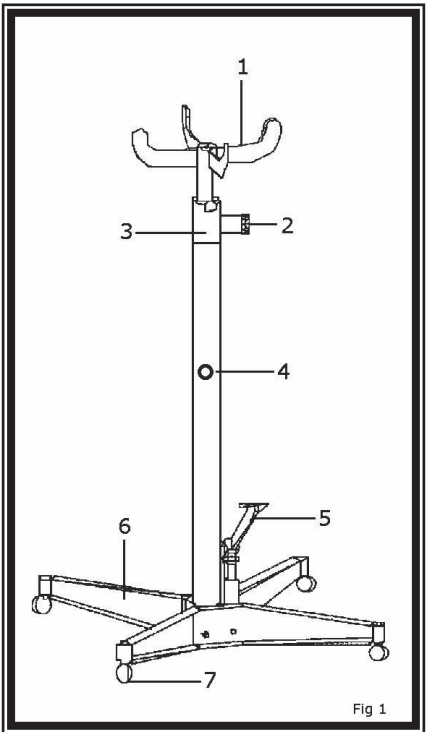
ASSEMBLY

Tools required for assembly (not supplied):

- 1x 17mm Spanner
- 1x 18mm Spanner

1. Locate the two leg stands.
2. Connect both leg stands to the bottom base using the four M10 x 25 bolts supplied (Don't forget to use the four M10 washers and spring washers).
3. Next connect the four castors to the ends of the leg stands using the M12 domed nuts & washers as supplied.
4. Make sure all bolts and nuts are tight.
5. Fit saddle.

Below is a diagram of how the transmission jack should look after assembly.



1	Saddle
2	Release valve
3	Piston
4	Oil filler screw
5	Foot pedal
6	Leg stand
7	Castor

USING THE JACK

Before using the transmission jack have a visual inspection to make sure there are no oil leaks or lack of oil.

- Open the oil filler screw but do not remove it (fig 1 No4).
- Pump foot pedal to desired height.

Lowering the Transmission Jack:

- Slowly turn the release valve (fig 1 No2) anti clockwise until fully lowered.
- Tighten back up the oil filler screw.



Note: The oil filler screw must be **open** at all times whilst using the transmission jack.



Danger: Never load a weight greater than what the transmission jack was designed for, overloading can lead to personal injury or damage to the jack.

MAINTENANCE

Adding oil:

With the piston fully lowered, Remove the oil filler screw and fill with clean hydraulic oil until it starts to seep from the oil filler hole, once full screw the oil filler screw back in.

Changing oil:

To remove the oil lay the transmission jack on it`s side, remove the oil filler screw and allow the oil to drain into a suitable pan or tray, refill as describe above.



Note: Contact your local authority on how to dispose of the waste oil.

MAINTENANCE Cont...

Lubrication:

Add lubrication oil to all moving and pivoting parts every 3 months or more in a dusty environment.

Rust prevention:

Check the piston every 3 months for signs of corrosion (this is not covered by warranty), if necessary clean with a clean oil cloth. When not in operation always leave the piston in it`s lowest position.

Bleeding the system:

Remove the oil filler screw (fig 1 No4) fully , pump the jack slowly to its full position then lower slowly, repeat this several times, once the air has gone refit the oil filler screw.

TROUBLE SHOOTING

Symptom	Possible fault	Solution
Can` t reach full height	<ul style="list-style-type: none">• Lack of oil• Trapped air	<ul style="list-style-type: none">• Refill with oil• Bleed system
Won` t hold load	<ul style="list-style-type: none">• Low oil level• Seal problem	<ul style="list-style-type: none">• Refill with oil• Replace seals
Won` t lower completely	<ul style="list-style-type: none">• Trapped air• Low oil level	<ul style="list-style-type: none">• Bleed system• Refill with oil
Can` t lift load	<ul style="list-style-type: none">• Oil filler screw closed• Low oil level• Trapped air	<ul style="list-style-type: none">• Open oil filler• Refill with oil• Bleed system
Feels spongy whilst lifting	<ul style="list-style-type: none">• Trapped air• Low oil level	<ul style="list-style-type: none">• Bleed system• Refill with oil

If none of the above solutions work contact your distributor for repair.